



## **ADULT SOCIAL CARE AND PUBLIC HEALTH COMMITTEE**

**13 JUNE 2023**

<b>REPORT TITLE:</b>	<b>ALL AGE DISABILITY SERVICE REVIEW</b>
<b>REPORT OF:</b>	<b>DIRECTOR OF CARE AND HEALTH</b>

### **REPORT SUMMARY**

The purpose of this report is to present to the Adult Social Care and Public Health Committee the findings and recommendations for greater alignment of All Age Disability Service. The scoping, initiation, planning and engagement phase is complete.

The recommendations within this report support the delivery of the Wirral Plan - 'Equity for People and Place 2021-2026' with particular focus to the key theme of 'Active and Healthy Lifestyle', with the right care, at the right time with the best possible outcomes for adults with care and support needs. They also underpin the Wirral Health and Well-being Strategy 2022-2027 for people to live and age well.

This report is a key decision. It affects all wards.

### **RECOMMENDATION/S**

The Adult Social Care and Public Health Committee is recommended to approve the priorities and indicative timeframe for the All Age Disability Review, as listed in Appendix 4 to this report.

## **SUPPORTING INFORMATION**

### **1.0 REASON/S FOR RECOMMENDATION/S**

- 1.1 There is a greater reliance in Wirral on more traditional care services, which leads to Wirral being a higher spend Council on disability services. This can also mean that outcomes achieved for people with disabilities do not always help them to achieve aspirational targets or to be as independent as they could be. This can be improved through better alignment, joining up planning, and collaboration between services. The experiences of people supported across the life course would be greatly improved by focussing upon their aspirations and life goals in a more effective and clear manner.
- 1.2 Wirral is a high spend Council on adults with a disability and there are opportunities to optimise outcomes for people.
- 1.3 Effectively supporting young people and their families through transition from Children's to Adult's Services will reduce reliance on more traditional and intensive accommodation-based services. It will enable effective planning to meet housing and employment needs alongside education and training opportunities. This should contribute to improving outcomes for individuals and families.
- 1.4 Four main themes have emerged from engagement with those who have lived experience either as people supported, carers or practitioners of the system. A summary of these engagements and graphic visualisations of engagement sessions can be found in Appendix 1 of this report. The four emerging themes are:
  - a. Starting Earlier from 14 and better joined up planning;
  - b. Housing Options;
  - c. Training, Volunteering and Employment; and
  - d. Better, Accessible & Relevant Information for people, parents and carers.
- 1.5 The deliverables and milestone plan set out in this report are aligned with these themes in appendix 4.

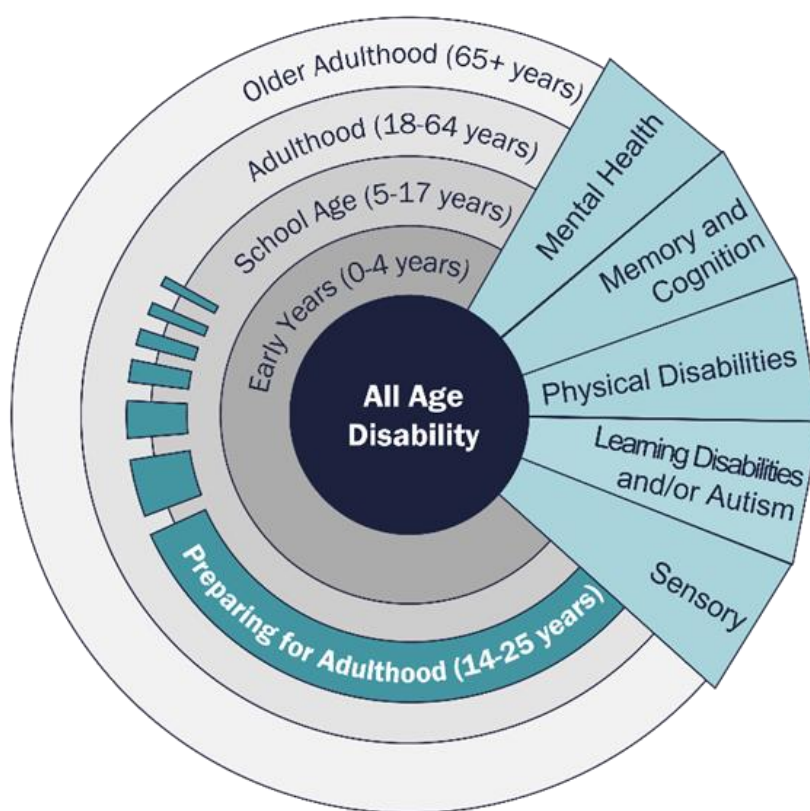
### **2.0 OTHER OPTIONS CONSIDERED**

- 2.1 Not to review All Age Disability Service. This would not deliver the best outcome for people with disabilities and their families/carers.
- 2.2 Not to review All Age Disability Service. This would not deliver cost avoidance opportunities and will impact on the delivery of efficiencies identified for this service area set for 2023/24.

### 3.0 BACKGROUND INFORMATION

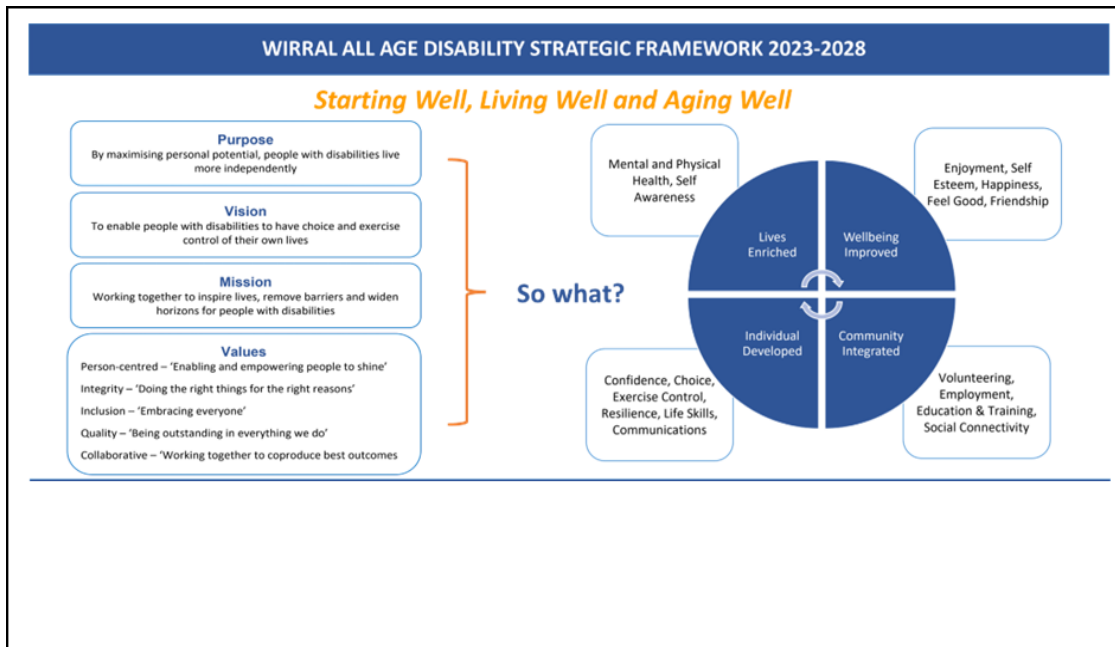
- 3.1 In January 2023, the All-Age Disability Review initiation, planning, and engagement commenced and was completed as planned in March 2023. The report presented to this Committee in March 2023 provided a progress update on this phase of the review.
- 3.2 Diagram 1 represents the overall scope of the All Age Disability Review. A review of this scale is significant, the first phase focused on Preparing for Adulthood (14-25 years). Future areas with be identified as strategic priorities for the All-Age Disability Partnership Board.

Diagram 1:



3.3 In April 2023, the draft All-Age Disability Strategic Framework 2023-2028 was produced outlining the purpose, vision, mission, values, and outcomes as illustrated in Diagram 2. This is currently under further co-development by the All-Age Disability Partnership Board to align its strategic priorities.

Diagram 2:



3.4 The review has focused on 4 keys design principles:

- a. Coproduction and collaboration placing people with disability at the heart of everything we do;
- b. Utilising data, insight, and intelligence, as well as best practice examples;
- c. Embracing strength-based practices, developing, and improving personalised care and support; and
- d. Enabling greater social value and economic benefits by better ways of working.

3.5 The four emerging themes outlined in 1.4 of this report were identified and the focus on preparing for adulthood a review of practice has been completed (as set out in Appendix 2 to this report). The findings of the review and the engagement with key stakeholders and people with lived experience have shaped the recommendations within this report.

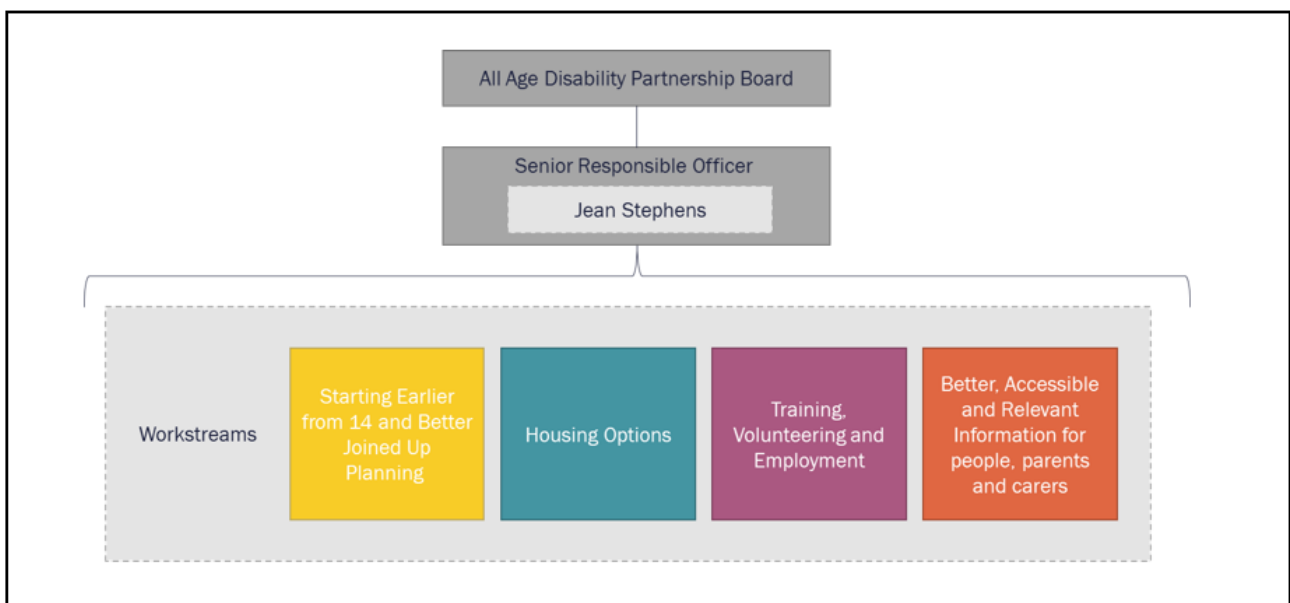
3.6 The Preparing for Adulthood outcomes are as follows:

- a. Increase the number of 18–25-year-olds in supported employment;
- b. Increase in the number of Education Health Care Plans with specific reference to employment and accommodation plans;
- c. Increase the number of 18–25-year-olds utilising a direct payment;
- d. Increase reports of having choice and feeling in control over lives;
- e. Reduce the number of 18–25-year-olds in out of area placements;

- f. Increase in the range of community accommodation options for people with a learning disability and/or autism; and
- g. Increase in the number of 18–25-year-olds with care and support needs utilising technology in their day-to-day care.

- 3.7 Achieving these outcomes will provide an evidence base to support CQC inspection (see Appendix 3 to this report).
- 3.8 The key milestone deliverables and indicative timelines are noted in Appendix 4
- 3.9 The review will be overseen by the All-Age Disability Partnership Board. See Diagram 3 for a diagram of the governance structure.

Diagram 3:



## 4.0 FINANCIAL IMPLICATIONS

- 4.1 A £1M efficiency target was set for 2023/24 as part of the current Financial Plan. The additional efficiency target for 2023 is challenging and the review will not necessarily deliver this fully, however, the care packages review target will be increased and used to deliver the specific savings.
- 4.2 The implementation stage of All Age Disability Review will focus on cost avoidance opportunities, enabling the organisation to effectively manage demand. The practice review included in Appendix 2 provides evidence of cost avoidance opportunities, as an example, through the development of a supported employment framework. The cost avoidance opportunities associated with the review will be quantified following further analysis of local data.

## **5.0 LEGAL IMPLICATIONS**

- 5.1 The Council has a legal duty to assess the needs of people who may need care and support, to promote independence and wellbeing, and can apply discretion as to how to meet those needs identified.
- 5.2 All proposed changes will need to be in line with statutory requirements, including The Mental Health Act 1983, The Care Act 2014, and The Health and Care Act 2022.

## **6.0 RESOURCE IMPLICATIONS: STAFFING, ICT AND ASSETS**

- 6.1 Recognising the current capacity challenges within the Council, resources will be realigned to support the deliverables noted in Appendix 4. As the programme progresses, if additional resources are required these will be subject to a separate report.

## **7.0 RELEVANT RISKS**

- 7.1 There is low risk presented by the plan to review All Age Disability services for people who need care and support under the Care Act.
- 7.2 There is a risk due to delays in commencing the review which may impact on future cost avoidance opportunities.
- 7.3 There is a risk that on completion of the review, implementing changes may require more than a year to implement due to capacity constraints.

## **8.0 ENGAGEMENT/CONSULTATION**

- 8.1 Stakeholders and experts by experience have been engaged in identifying the themes outlined in this report. The graphic illustrations from the engagement events are included in Appendix 1. Co-production and collaboration are at the heart of the implementation plan and engagement with key stakeholders and experts by experience will be engagement in the implementation of the recommendations. Where applicable, consultation will be undertaken.
- 8.2 The initial findings for the review were presented to Committee Members from the Adult Social Care and Public Health Committee and Children, Young People and Education Committee in the form of an internal workshop – copy of the presentation given is included in Appendix 5.
- 8.3 The final report will be shared also to the Children, Young People and Education Committee.

## **9.0 EQUALITY IMPLICATIONS**

- 9.1 An Equality Impact Assessment (EIA) has been produced and will continue to be updated as part of the implementation of the proposed deliverables in Appendix 1.

This is located here: <https://www.wirral.gov.uk/communities-and-neighbourhoods/equality-impact-assessments/equality-impact-assessments-january-202-6>.

- 9.2 Consideration will also be given to the need for an EIA for any individual areas of work within the review where this is identified.

## **10.0 ENVIRONMENT AND CLIMATE IMPLICATIONS**

- 10.1 Consideration will be given to environmental and climate implications in the planning and implementation of the review, and in its recommendations.

## **11.0 COMMUNITY WEALTH IMPLICATIONS**

- 11.1 Care provider organisations employ significant numbers of Wirral residents who contribute to the local economy. People with a disability having greater opportunity to reach their aspirations for work, housing, leisure, learning and volunteering will positively impact on the vibrancy and development of local communities and economies.

### **REPORT AUTHOR: Jean Stephens**

Assistant Director of All Age Independence and Provider Services  
telephone: 0151 637 2030  
email: [jeanstephens@wirral.gov.uk](mailto:jeanstephens@wirral.gov.uk)

## **APPENDICES**

Appendix 1 – Engagement Summaries and Graphic Visualisations from Engagement Sessions

Appendix 2 – Best Practice Review Findings Report

Appendix 3 – CQC Inspection Contributions

Appendix 4 – Indicative Project Timeline

Appendix 5 – Presentation given to Committee Members from the Adult Social Care and Public Health Committee and Children, Young People and Education Committee

## **BACKGROUND PAPERS**

Wirral Adult Care and Health Market Position Statement:  
<https://www.merseysidemarketpositionstatement.co.uk/#section-1>

## **TERMS OF REFERENCE**

This report is being considered at the Adult Social Care and Public Health Committee in accordance with Section 2.2(a) adult social care matters (e.g., people aged 18 or over with eligible social care needs and their carers).

**SUBJECT HISTORY (last 3 years)**

<b>Council Meeting</b>	<b>Date</b>
Adult Social Care and Public Health Committee	6 March 2023
Adult Social Care and Public Health Committee	14 June 2022